



इशिराजतारुमणि®

The Mystic Energy Bead connecting the Tree of Life with the Source of Life















## *Shiva Jataamani Ekamukhi*

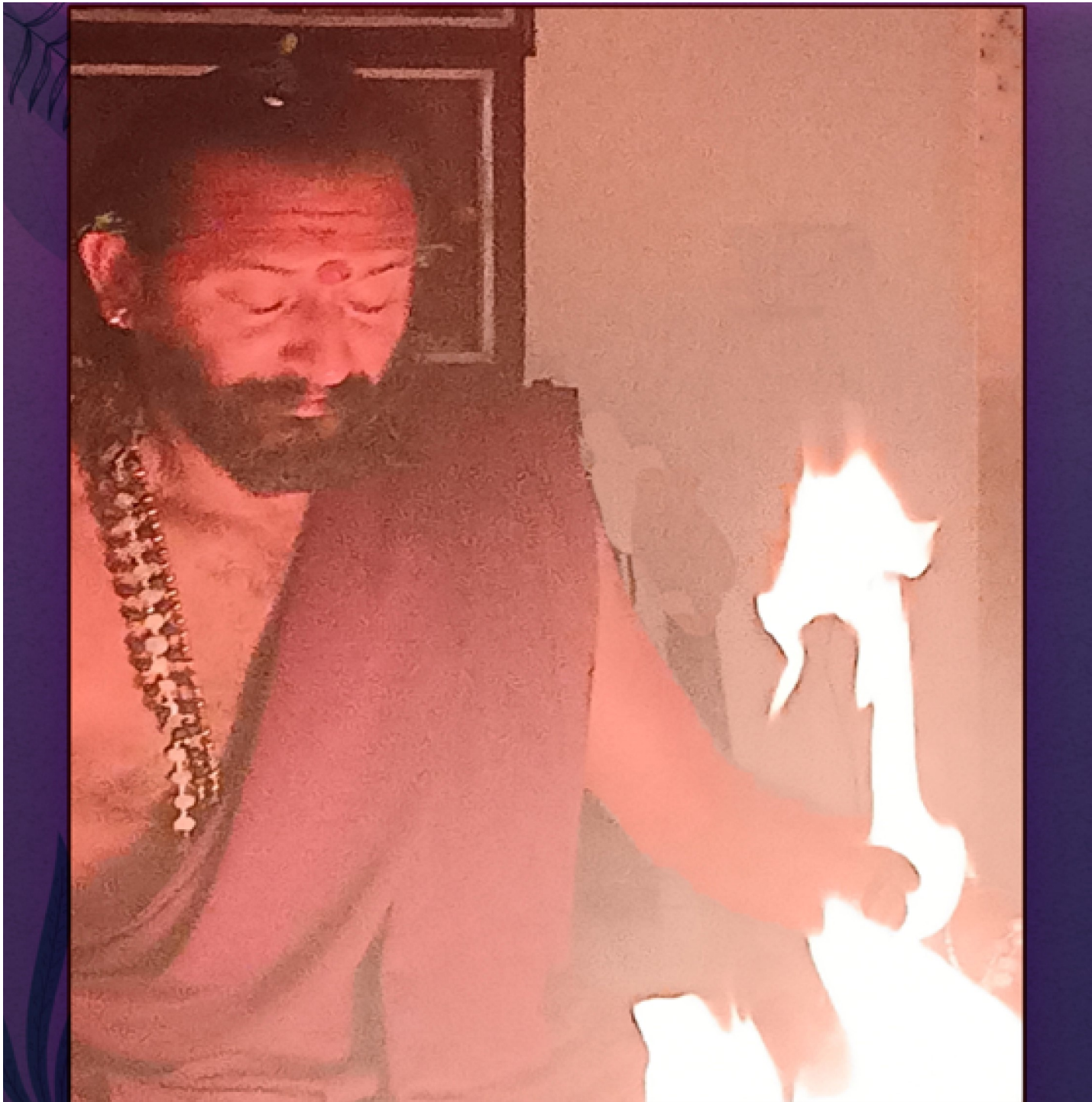
A unique mystic energy Yogic Tool of Vedic Rishis.

Among many time tested energy Tools,  
Rudraksha and Shiva Jataamani stand  
out as unique for various specific  
reasons. For an individual citizen it is  
for life time protection and inner growth.

For the nation it is an integral part of  
SRD, its Spiritual Resource Development.  
Heritage awareness and cultural literacy  
make a Bharateeya proud, responsible  
and enlightened citizen to pursue SRD.

SHIVA JATAAMANI HAS COME TO YOU WITH  
THE SHIVA SANKALPA TO EMPOWER YOU TO  
MAKE YOU A TOOL FOR LOK KALYAN.



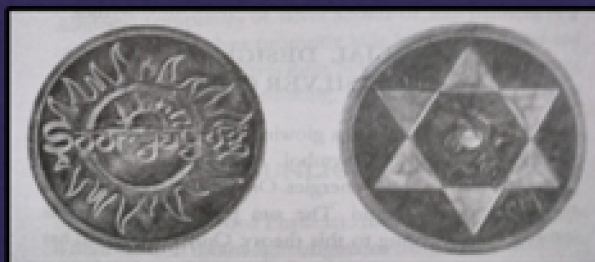




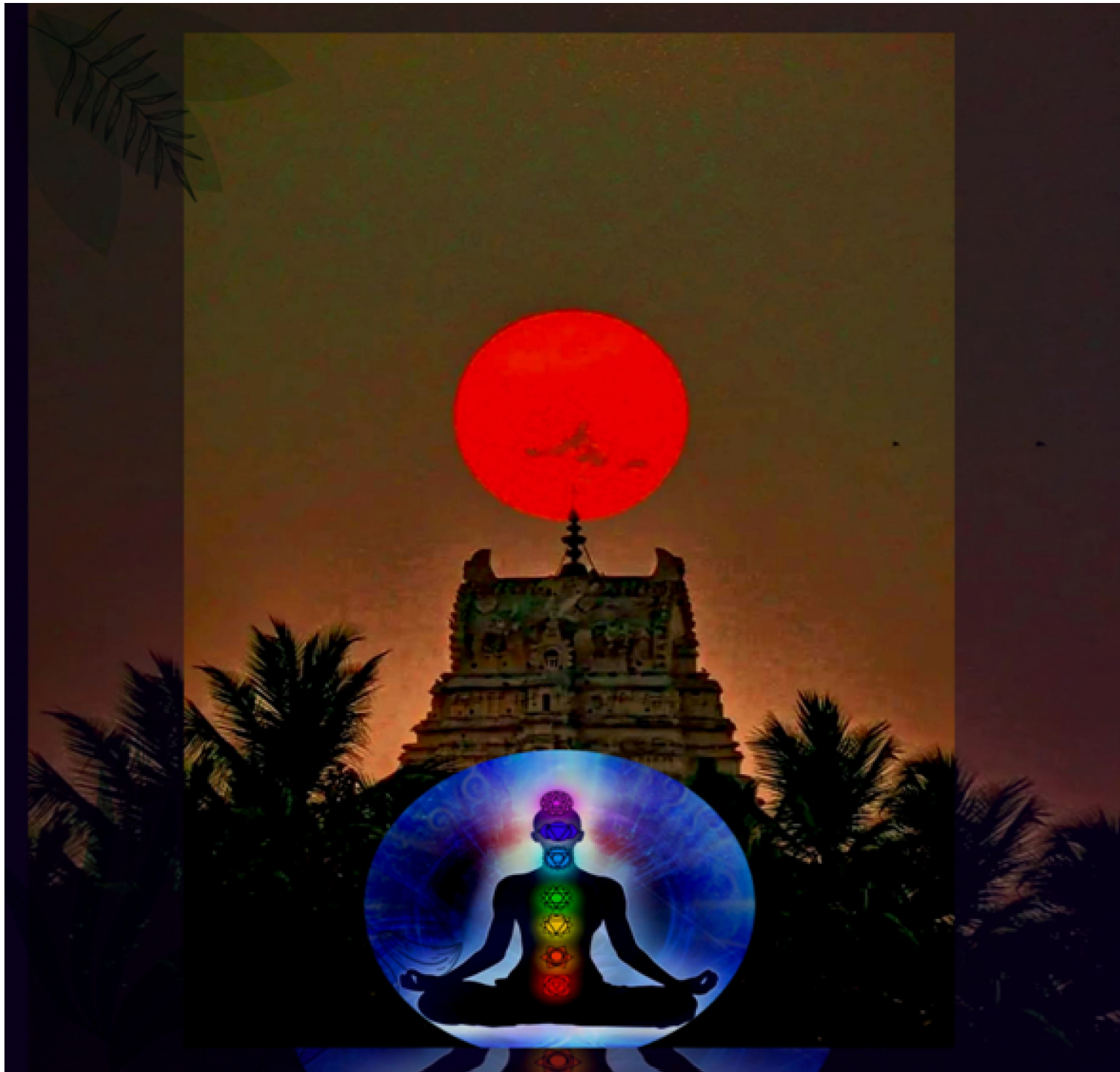
## *Sooryayog*

*Sooryayog* is a deep spiritual practice rediscovered through Yogasadhana by Shri Soorya ji. This sadhana reached thousands of seekers of refinement and enlightenment, empowerment and abundance in every sense. Shri Soorya ji developed a very powerful Tool based on Yoga-Tantra Shastras. It is the SILVER COIN.

Two triangles forming a hexagon with a central Dot - Bindu drawn on a silver coin of one inch diameter is used for Soorya Yog sadhana under initiation and guidance. Silver Coin needs activation and the sadhak needs instruction to get started.







Orb of Sun, the physical planet, the Sadak's Atma-Soorya (Aham) and SooryaNarayana (Paramatma) the source of creation - these are the components of *Sooryayog*. For a Sooryayogi, *Shiva Jataamani* and its mysteries are spritually readable and decodable.

Mahayogeshwara Bhagawan *Shri Krishna* mentions that he communicated the Secrets of Yoga to Soorya Devata. Its details can be tracked only through authentic Sadhana.

Different devine tools have manifested through Soorya Devata. Shiva Jataamani is one among them. Shiva Jataamani in Yoga Tantra perspective is being presented here.

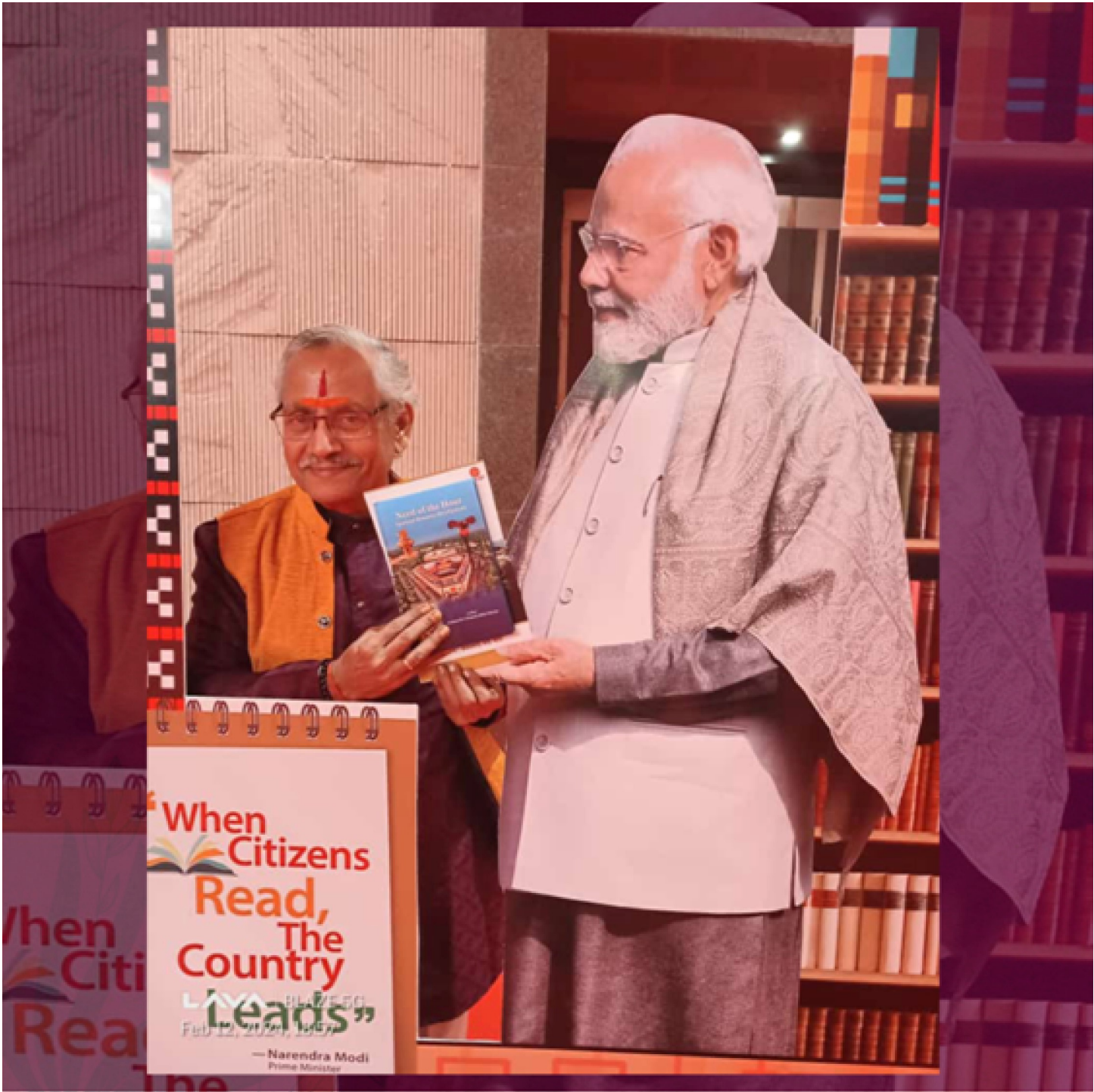




Heritage awareness and cultural literacy constitute Bharateeya Identity. Both contribute complementarily to SRD: Spiritual Resource Development of the individual citizen and the nation.

Acharya Dr S Ramakrishna Sharma has the firm conviction that these two core factors are the keys to unlock the best from our past for the all round development of Bharat. Ayurveda the scientific discipline of Life Energy Medicine, Vyakaranam the applied science of the language of consciousness, and Yoga the science of consciousness applications are integral and integrated to Purushartha – the holistic human progress. Eight sections of Ayurveda, Eight chapters of Vyakaranam and Eight limbs of Ashtanga Yoga are revelations of a single Maharshi – Bhagavan Patanjali.





Dr Sharma ji is dedicatedly engaged in evidence based experiential learning (Sadhana), and focused performance research (Upasana) for decoding Indian Knowledge Systems (better, Veda Vidya).

He is associated with Shri Soorya ji as Vedic Science based SRD researcher. *Janma-oushadhi-mantra-tapah-samadhijah siddhayah* (PYS-4-1). *Shiva Jataamani* can enhance the value of this *Sutra*.

Dr Sharma's new book titled *Need of the Hour/Spiritual Resource Development* is available on Amazon, Flipcart and Blue Rose Publishers. This book helps to know in depth about Sadhana and Upasana.  
<http://ishaa.org.in/srdforbharat/>

During Shri Soorya ji's Pournami Puja the miracle of Turmeric Powder covering the whole Mani occurred without human interference. So too, on certain days the Mani manifests golden yellow aura in during the night.





Rudraksha manifests as a Fruit on the tree botanically named as ELAEOCARPUS GANITRUS. This fruit draws energy from the Sun directly.

Shiva Jataamani rarely seen as an overgrowth on the roots of Rudraksha tree once in 5 or 6 years, draws the energy from the earth. UNLIKE RUDRAKSHA these beads do not have countable lines called Mukhas, faces.

It is Ekamukhi - round bottom and converged apex. Unidirectional fibres look like Flames of different shapes.

**THE SAMPLE BEAD SUBMITTED FOR YOGIC TESTS YIELDED AMAZING RESULTS.**  
The observations are documented as under.

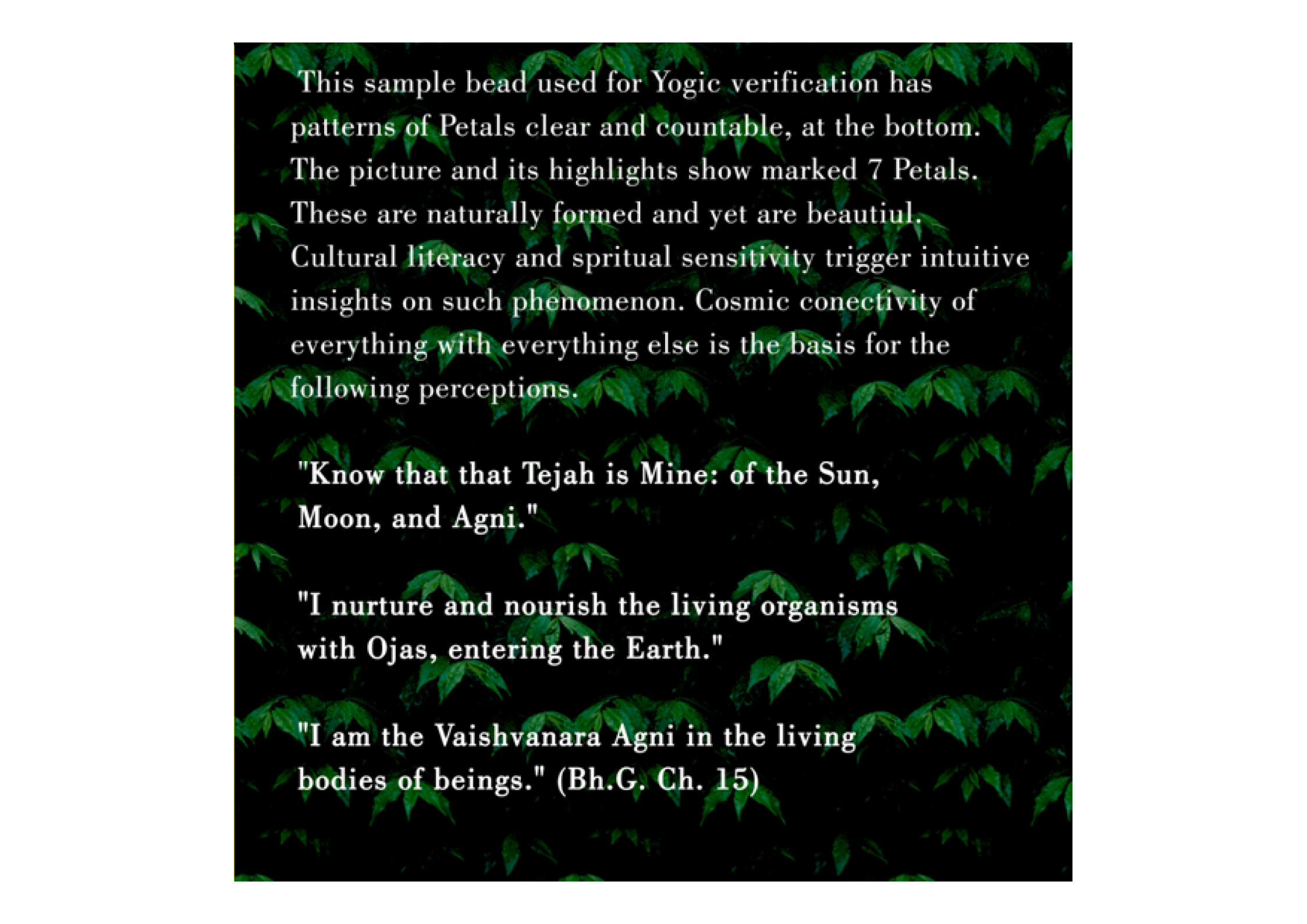


## Shiva Jataamani & Silver Coin: Scientific Data

Both can absorb seven types of emissions in the cosmos.



Photoelectric, thermal, field, secondary, nuclear, pranic, and cosmic emissions. How these two mystic energy tools function to enhance potentials of mind and empower the mind and consciousness is a matter of Yogic experience.



This sample bead used for Yogic verification has patterns of Petals clear and countable, at the bottom. The picture and its highlights show marked 7 Petals. These are naturally formed and yet are beautiful. Cultural literacy and spiritual sensitivity trigger intuitive insights on such phenomenon. Cosmic connectivity of everything with everything else is the basis for the following perceptions.

"Know that that Tejah is Mine: of the Sun, Moon, and Agni."

"I nurture and nourish the living organisms with Ojas, entering the Earth."

"I am the Vaishvanara Agni in the living bodies of beings." (Bh.G. Ch. 15)





### Comprehensive Biofield Scan Evaluation Report of Two Rudraksha beads (Sample 1)

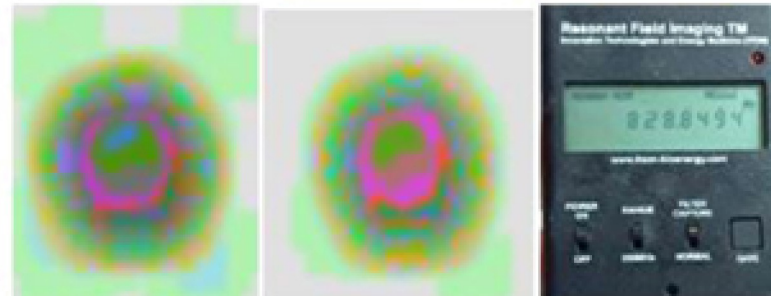
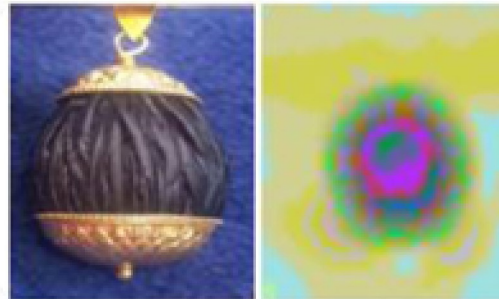


**Gold, Green, Pink, Blue, Yellow all positive colours with symmetrical circles represented in Scan Field of the Rudraksha Bead and Subtle Frequency meter reading suggest that this bead 1 is Original and has Positive Energy Effects. The Energy can be further enhanced of the Rudraksha Bead with more Spiritual Rituals.**



### Comprehensive Biofield Scan Evaluation Report of Two Rudraksha beads (Sample 2)

Sample 2  
Rudraksha Bead  
with Gold  
Capping

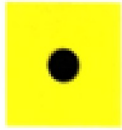


Green, Pink, Blue, Yellow, Red, Orange mix of positive and negative colours with asymmetrical circles represented in Scan Field of the Rudraksha Bead 2 and higher Subtle Frequency meter reading suggest that this bead 2 is Original but mixed interpretation due to presence of the Gold metal.

Our Patented Biofield Scan Technology is that it captures Human Energy Field (HEF) very accurately. However, capturing of Biofield of the Non-living matter may show mixed results. Energy Evaluation of the bead using different technology is needed.



सूर्योहम् सूर्योहम् सूर्योहम् सूर्योहम् सूर्योहम् सूर्योहम् सूर्योहम्



PRITHVI TATTVA  
BEEJ MANTRA

## MULADHAR CHAKRA



DEITY - BRAHMA  
GODDESS - DAKINI



JAL TATTVA  
BEEJ MANTRA

## SWADHISTHAN CHAKRA



DEITY - VISHNU  
GODDESS - SHAKINI



सूर्योहम् सूर्योहम् सूर्योहम् सूर्योहम् सूर्योहम् सूर्योहम् सूर्योहम्  
The first *Chakra Mooladhaara* is the dwelling base of *Shri Ganesha*. It is His *Kshetra*. *Soorya/Ravi/Adithya* is named *SahasraKirana* - having 1000 Light Patterns. *ShriGanesha* is said to have the color of Sun of Dawn - *Aruna* -Red of *Sindoora*. (*Balasoorya sama prabha*, not *Koti*).

After waking up before Sunrise the first thing to feel and pray to Him, and proceed to the 7th *Chakra Sahasrara* to invoke *Shri Guru Paduka*. Then move down to *Heart Chakra* to feel the warmth and presence of *AHAM*. Then, 21,600 *HAM-SAH* rounds of the breathing through out 24 hours - dawn to dawn are offered to the presiding *Devatas* of each *Chakra* from *Mooladhara* to *Sahasrara*. In the above sadhana while sitting on the bed before getting up, a *Sooryayogi* who is blessed to get the TOUCH of Shiva *Jataamani* OR the Silver Coin will feel and gradually realise the connectivity of *Aham*, *Soorya* and the *Mani*.



A Rudraksha fruit gets disconnected from the Cosmos when it falls down or removed from the tree. Tree of Rudraksha and the Cosmos are connected.

As long as a wave remains in the ocean it remains connected to the ocean, and the other waves. When a pot removes a wave from the ocean it is delinked and disconnected from the ocean.



For a wave to be an integral part of the ocean again, it needs to be reconnected. Similarly in the case of Rudraksha and *Shiva Jataamani* it needs activation and reconnection with the Cosmos through *Acharya - Sadhaka* bonding with *Shiva Jataamani*.



VISHUDDHI  
CHAKRA

VISHUDDHI  
CHAKRA



DEITY - SADA SHIV  
GODDESS - RAKIRI



AJNA  
CHAKRA

AJNA  
CHAKRA



DEITY - ARDHA HARISHWAR  
GODDESS - HAKIRI



SHIV TATTVA  
MEE/MANTRA ॐ

# SAHASRARA CHAKRA



DEITY - PARAM SHIV  
GODDESS - MAHA SHAKTI

सुयोहम् सुयोहम् सुयोहम् सुयोहम् सुयोहम् सुयोहम् सुयोहम् सुयोहम्

It is an intricate three way process.  
**WHEN THE SHIVA JATAAMANI IS  
RECONNECTED TO COSMIC  
CONSCIOUSNESS(SHIVA) IT CONNECTS THE  
SADHAKA - YOU, TO  
THE COSMIC CONSCIOUSNESS.**

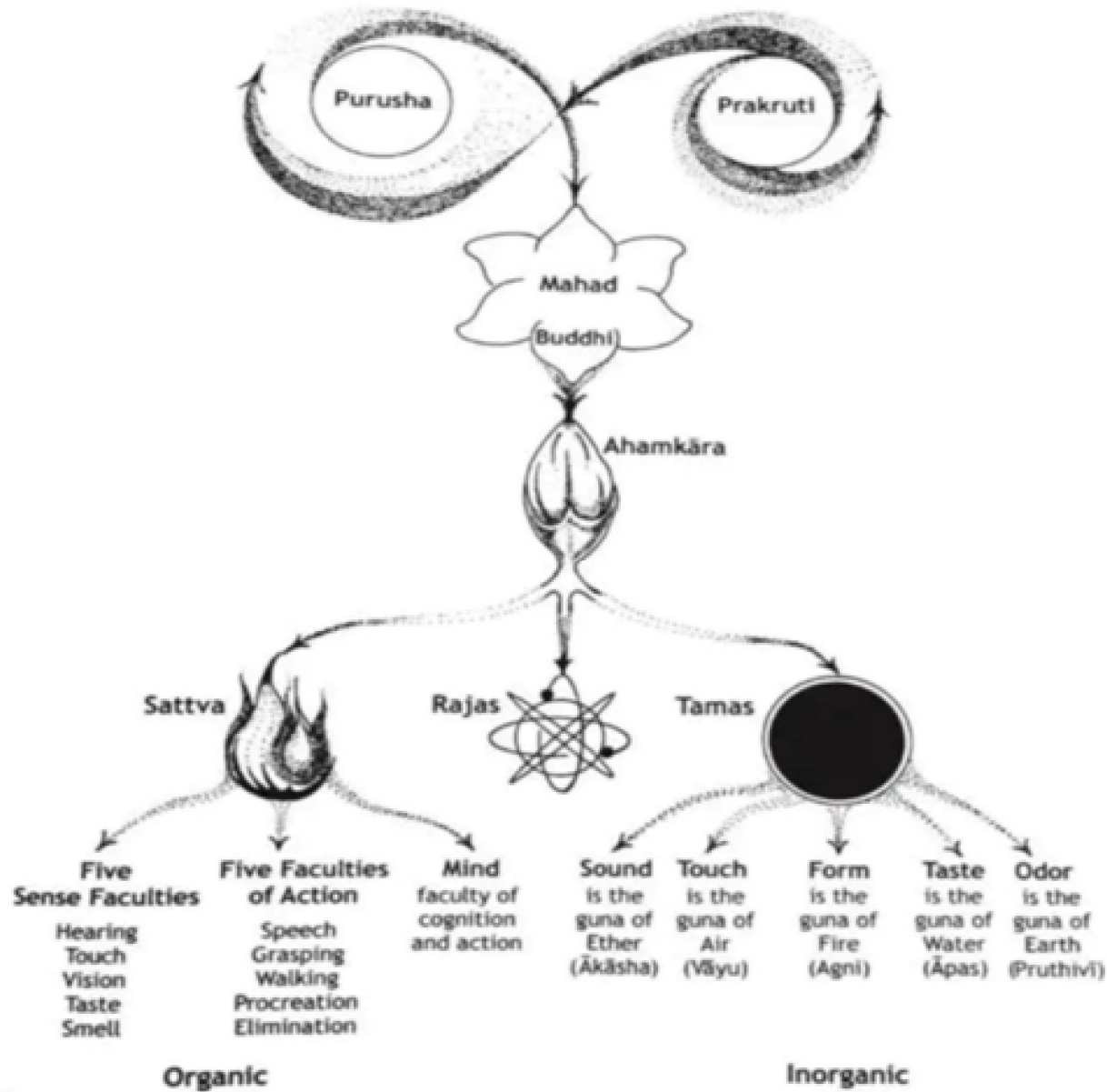
*Jiva aham* is elevated to *Shiva* in the *Chidakasha*, the inner spiritual space. The *Shivoham* expanse of *Jiva aham* is to be experienced through *Sooryoham*.

The Orb of Sun is located in the sky. But reach of the *Jyothi* - Light is all pervasive. Light of Sun takes travel time. *Shiva Prakasha* doesn't need time.

He is ever  
***Akhanda Mandala Aakaram.***



# The Journey of Consciousness into Matter



The Pancha Maha Bhutas are not to be taken as what the translations present to us as “meaning”. The experiential meaning is available only to the Yogi-Chittam. Each of the five has three Domains Namely Adhi-Bhutam, Adhi-Daivam, Adhi-Atmam. Related to the physical Cosmos, to the Infinite Cosmic Spiritual Expanse, and has to discover these. For example Chidakasha - Chittakasha - Bhutakasha; Chidagni - Bhutagni - Vaishvanara Agni / Taijasa Agni. SooryaYog practiced for long period can help comprehend these Tattvas.





## Shiva Jataamani Activation And Reconnecting Through Shakti.

It is necessary to know about what the Vedic Rishis realised as Devaatmashakti.

The term is a compound of three words combined. Deva+Atma+Shakti. From this, two derivations are possible.

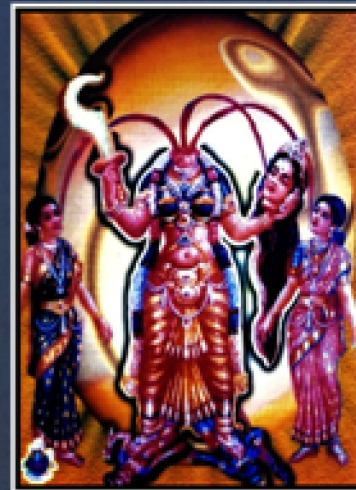
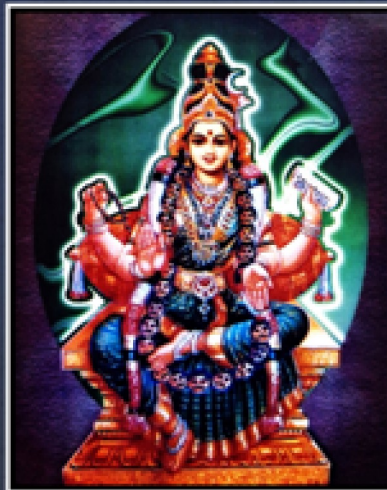
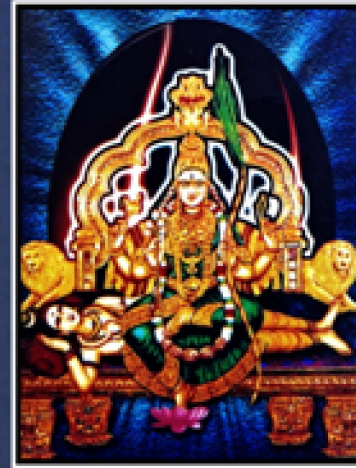
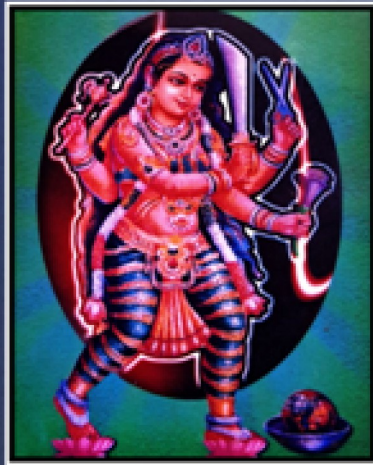
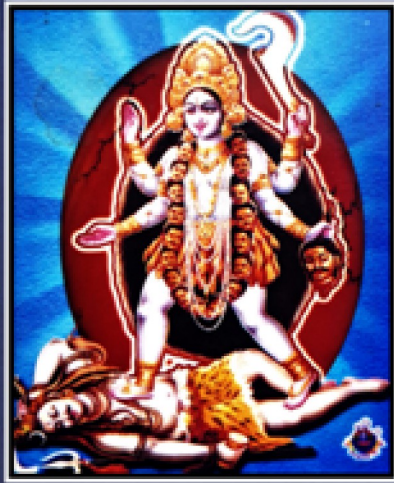
1)Deva-Shakti (Macrocosmic)

2)Atma-Shakti (Microcosmic).

Shakti has three functional aspects: Iccha Shakti - Jnana Shakti - Kriya Shakti.

There are TEN Maha Vidya Devies as the different Divine Forms invoked by the Rishis for the good of humanity especially and for harmonious existence of all beings.





The divine names of these are as given below:

- Devi Kaali
- Devi Taara

BOTH ARE RELATED TO APANA AND  
KOORMA RESPECTIVELY.

- Devi Tripurasundari/Shodashi
- Devi Bhuvaneshvari BOTH ARE RELATED TO

PRANA AND NAGA RESPECTIVELY.

- Devi Tripura Bhairavi
- Devi Cchinnamasta

BOTH ARE RELATED TO UDANA AND  
DEVADATTA.

- Devi Dhumavati
- Devi Bagalamukhi

BOTH ARE RELATED TO SAMANA AND  
KRIKARA RESPECTIVELY.







- Devi Matangi
- Devi Kamalatmika

BOTH ARE RELATED TO VYANA AND DHANANJAYA RESPECTIVELY.

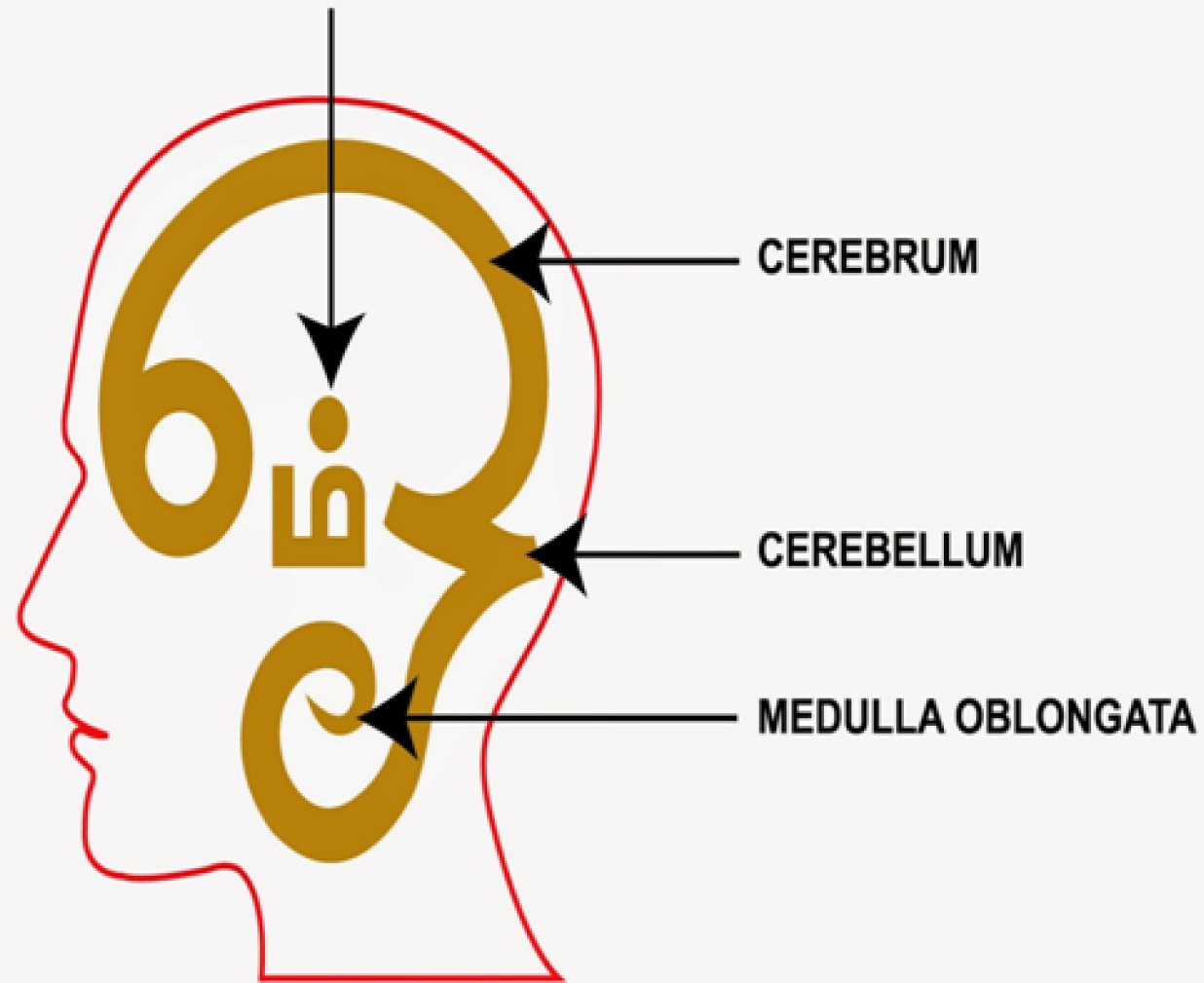
Here the Adhi Daiva domain is seen connected to Adhyatma domain. THE FIVE PRANAS AND FIVE UPA-PRANAS ARE SHOWN CONNECTED TO TWO DEVIES. The former belong to the Adhyatma and the latter belong to the Adhi Daiva domain.

At the domain of Adhi Bhutam, all major Shakti Peethams are said to have connections with the Adhi Daivam.

SHIVA JATAAMANI WOULD FUNCTION AS A LINK TO THE ADHI BHUTAM CONNECTING THE AHAM OF THE SADHAKA TO POORNA AHANTA.



**PINEAL GLAND**  
**The Super Brain**



Every object communicates at various levels simultaneously.

But what an object under observation communicates may not be readable by the programmed device totally.

Certainly what it can read and display totally depends on the defined and designed scope of the device.

Therefore, Scanner certificates cannot claim to be complete.

In actual experience the image given appears entirely different. Tamil Script of OM is given as an example.



# Sri Chakra

Schrodinger quantum numbers

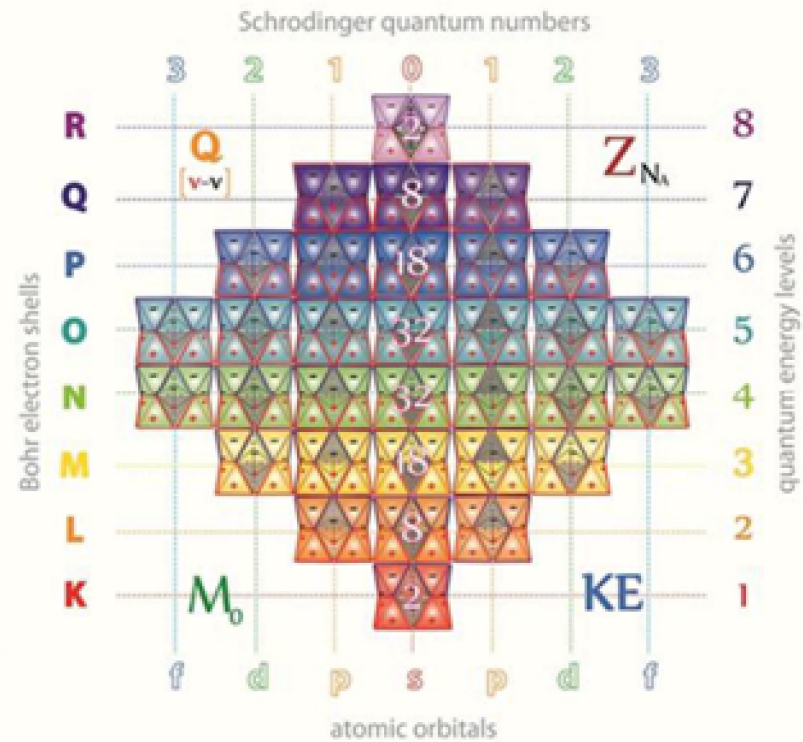
3 2 1 0 1 2 3

Connecting ancient religious teachings to Science

## Sri Chakra



## Sri Yantra



In the Shri Vidya school of Hindu tantra, the Sri Yantra ("sacred instrument", also Sri Chakra) is a diagram formed by nine interlocking triangles that surround and radiate out from the central (bindu) point.

It represents the goddess in her form of Shri Lalita Or Tripura Sundari, "the beauty of the three worlds (Heaven, Earth, Hell)"

# Sri Yantra

atomic orbitals

Modern Science so far has no means and tools to enter into the domain of the inner spiritual dimensions and fields of experiences which are beyond the scope of Scanners and ordinary minds.

Meanings beyond the linguistic symbols cannot be decoded by the electronic systems and by non-yogic minds.

Modern science cannot provide intuitive visions.

Vedic science begins where modern science finds no way further.

This is because of the fact that both these disciplines have different paradigm.





## Foundation for Indian Scientific Heritage ® Trust

### Founder & Managing Trustee

Dr. S. Ramakrishna Sharma  
M.A [Eng.Lit]  
PhD [Eng.Lit]  
PhD [Sanskritam]  
Researcher Vedic Sciences

### Trustee & Treasurer

Smt. R. Susheela

### Trustee

Sri R. Karunyanidhi

### Advisory Board

Sri Arun Kumar Upadhyay  
M.Sc (Physics), M.Sc (Forestry)  
M.Sc. (Mathematics), IPS, IPS  
Odisha

Dr. Harsh Vardhan Tiwary  
PhD (IISc Bangalore)  
Former Vice-Chancellor  
Barkatullah University Bhopal  
Ex-Chairman AFRC Regulatory  
body of MP Bhopal

Dr B V K Sastry  
Founder - President  
Yoga-Sanskritam  
University, Florida, USA

Dr J Sreenivasa Murthy  
B.A. (Hons), M.A.  
PhD [Sanskritam]  
Bengaluru

Vedamurthi Sri. Kaggi  
Gopalakrishna Acharya  
Chitrapura, Mangaluru

## Shiva Jataamani (Eka Mukhi)



This is to certify that the sample bead made available for verification and certification has fulfilled the traditional tests to check the origin and originality of the obtained bead. It is taken from the roots of Himalayan Rudraksha Tree as stated by the Aghori who collected the same from below the Rudraksha Tree. Such beads are found as outgrowth below the ground and it takes intuitive vision to locate and gather them.

The Aghories have the only Sankalpa to bless the humanity with spiritually empowering materials like this, for an example. Hence they are invaluable, and are not considered to be a market product. Only a Dakshina for a spiritual cause can be deemed befitting the value.

The parameters of verification and certification used by our research centre are the higher Yogic Practices of Dharana, Dhyana and Samadhi upon a given object which is brought to our centre for the said purpose.

The bead is known among the Aghories as Shiva Jataamani and it is Eka Mukhi that is unidirectional face like combed fibres converging on to one end.

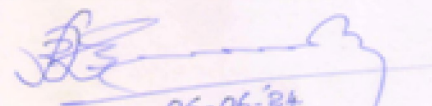
Spiritual Properties of Shiva Jataamani Eka Mukhi

Gold capped Bead worn on a golden chain or on a black silk/wool thread at the Anahata Chakra point helps conserving the pranic energy in the body and attracts wealth.

Monday being the day marked for Shiva, the bead should be worn after the bath in the morning within one hour of sun rise. The beneficiary should consult an authentic astrologer to fix the Sadhaka/Sampath Tara Bal in conjunction with Monday. Shiva Panchakshari Japa (1008 times) by the beneficiary would enhance the potency of the bead. The bead has to be removed during bed time, and kept in Ganga water on a clay vessel.

This is certified under the seal and signature of the trademark as per [www.ishaa.org.in](http://www.ishaa.org.in) owned by Acharya Dr S Ramakrishna Sharma



  
06-06-24

Srinivasnagar, Surathkal, Mangalore - 575025, Karnataka, INDIA

Mobile: +91 94830 17280 | E-mail: [vedic.conf@gmail.com](mailto:vedic.conf@gmail.com) | Website: [www.ishaa.org.in](http://www.ishaa.org.in)



The Certificate provided by Foundation for Indian Scientific Heritage Trust is holistic and true to the nature of the object under the process of Dharana, Dhyanam, and Samadhi in keeping with the Vedic research methodology. The certificate is self explanatory.

Website:- [www.ishaa.org.in](http://www.ishaa.org.in)

email id:- [shivajataamani@gmail.com](mailto:shivajataamani@gmail.com),  
[www.shivajataamani.com](http://www.shivajataamani.com), [www.shivajataamani.org](http://www.shivajataamani.org)



## सूर्योहम्

“In this busy modern world, the purity of body and mind is attained through *Sooryayog* (a technique to harness the energy of the Sun for purification of the body, mind and spirit) and through *Chidakashyog* one attains Self-knowledge.”

*Shivajataamani*, a blessing received through Sooryayog is a very rare energy booster, purifier and soul elevating divine bead. It is presided over by *Bhagavan* Sri Aghora Mrutyunjaya.

- Shri Sooryaji

